

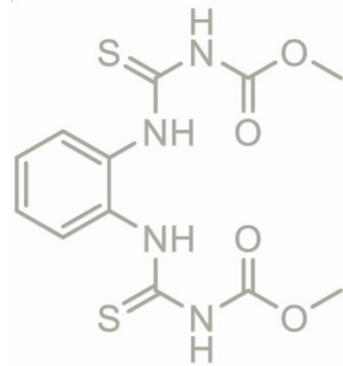


# Renovo

## Multi-Purpose Systemic Solution

**Renovo™**, which contains the active ingredient thiophanate-methyl (TPM), provides preventative and curative control of some of the toughest turf diseases by utilizing a unique mode of action, not contained in any other fungicide in Canada.

These unique characteristics make **Renovo** an ideal tool for disease and resistance management. Preserving our industry's limited availability of chemical families has never been more important with the recent loss of iprodione. Fortunately, PMRA's recent reevaluation decision on TPM ensures **Renovo** will be available for many years to come.



- **Ideal iprodione alternative**
- **Unique, group 1 fungicide**
- **Broad spectrum disease control**
- **Preventative and curative properties**

### Active Ingredient

Thiophanate-methyl 500 g ai / L

### Fungicide Group

Group 1 - MBC

### Formulation

Suspension Concentrate

### Phytomobility

Xylem mobile

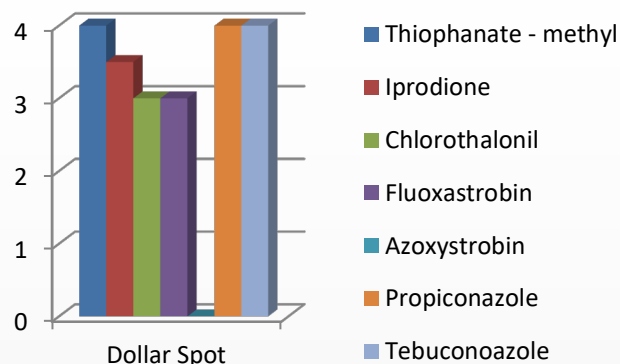
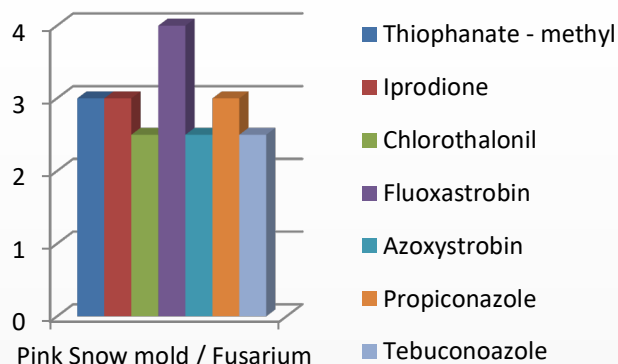
### Package Size

2 x 10 L

[www.belchimturf.ca](http://www.belchimturf.ca)

Grover 647 225 8035 paul.grotier@belchim.com  
BJ 416 457 7785 billyjoe.carey@belchim.com  
Big Bear 519 820 8929 barry.johnson@belchim.com

 **BELCHIM**  
TURF PROTECTION CANADA



Chemical Control of Turfgrass Diseases 2020. (Vincelli, Clarke, Koch, Munshaw)

Rating system for fungicide efficacy.

4 = Consistently good to excellent control in published experiments.

3 = Good to excellent control in most experiments

2 = Fair to good control in most experiments

## Renovo Label Summary

Disease Controlled	Rate (/100 m <sup>2</sup> )	App Interval (days)	Water Volume (/100 m <sup>2</sup> )
Dollar spot	35 – 42	10 – 14	8 L
Brown patch	42 – 84	7	8 L
Pink snow mould	175 – 245	Apply once in late fall	8 L

## Highly Systemic & Rainfast

Renovo fungicide is absorbed by the roots, crowns & leaves and is translocated through the xylem to protect the entire plant from the inside out. This systemic activity creates a barrier against disease, protecting current and new growth from infection. Once the spray solution has dried on the plant it can't be washed off providing thorough protection.

## Renovo Case Coverage

Labelled Rate (/100 m <sup>2</sup> )	1 Jug (10 L)	1 Case (2 x 10 L)
42 ml	5.9 ac	11.8 ac
84 ml	2.95 ac	5.9 ac
175 ml	1.4 ac	2.8 ac
245 ml	1.0 ac	2.0 ac

Always read and follow label instructions  
RENOVO is a trademark of Nippon Soda Co.

